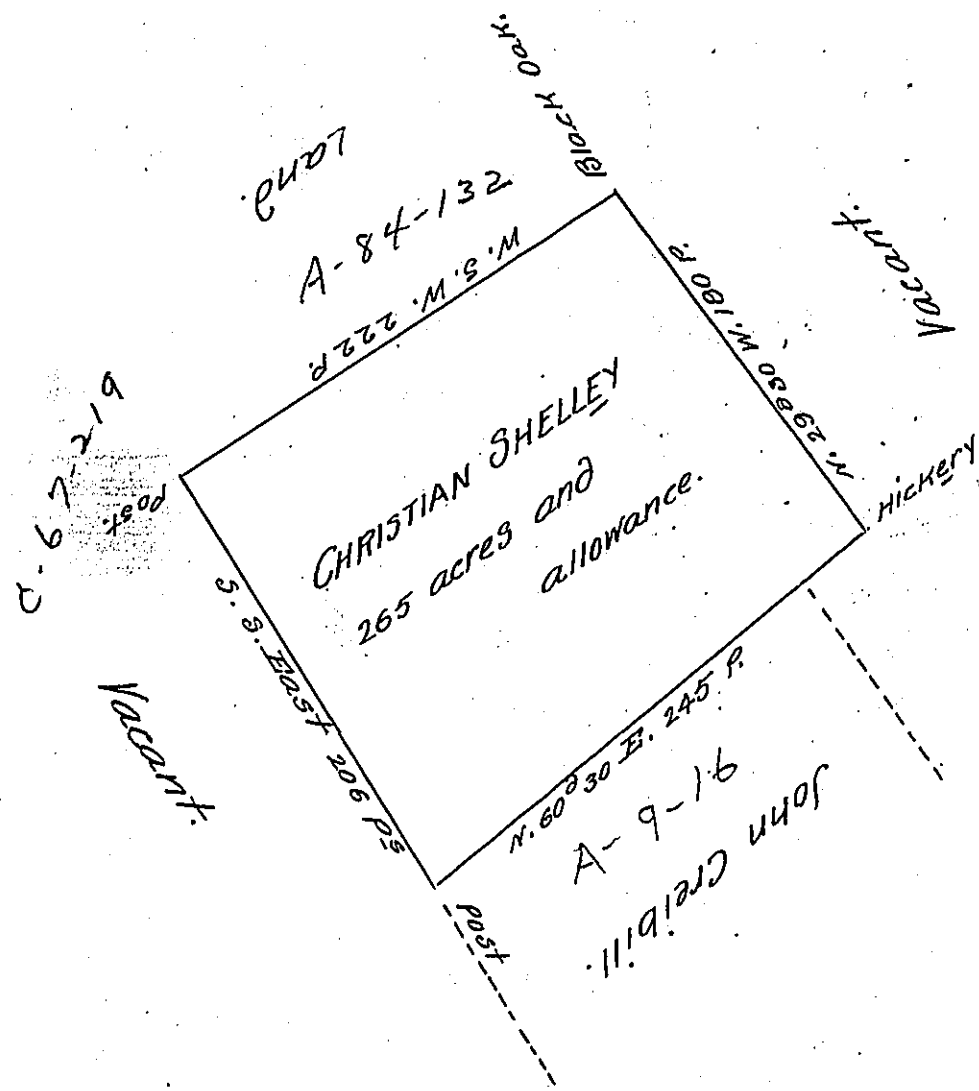


FORM NO. 1.

31.500 South
9.6 n
15.6 South
41.16



The above described Tract of Land situate in Manheim Township in Lancaster County was survey'd the 20th of April 1735^{*} by Warr^t from the Proprietaries dated the seventh day of March 1733.

P. Jn^r Taylor -

* 1736

IN TESTIMONY that the above is a copy of the original remaining on file in the Department of Internal Affairs of Pennsylvania, made conformably to an Act of Assembly approved the 16th day of February, 1833, I have hereunto set my Hand and caused the Seal of said Department to be affixed at Harrisburg, this eighteenth day of October 1906

Loach P. Brown
Secretary of Internal Affairs.